

KLARUS custom SMART reversible battery, insert either way around

XT15 **1020 LM**
Upgraded



Approved
for use



Rechargeable
in XT12



Approved
for use



Rechargeable
in XT12



Approved
for use



Rechargeable
in XT12



KLARUS custom Li-ion
dual-orientation battery

Any 18650 batteries
with PCB protection



Any CR123A batteries



Rechargeable **Ultra Long-range** Tactical Flashlight

XT15 **1020 LM**
Upgraded

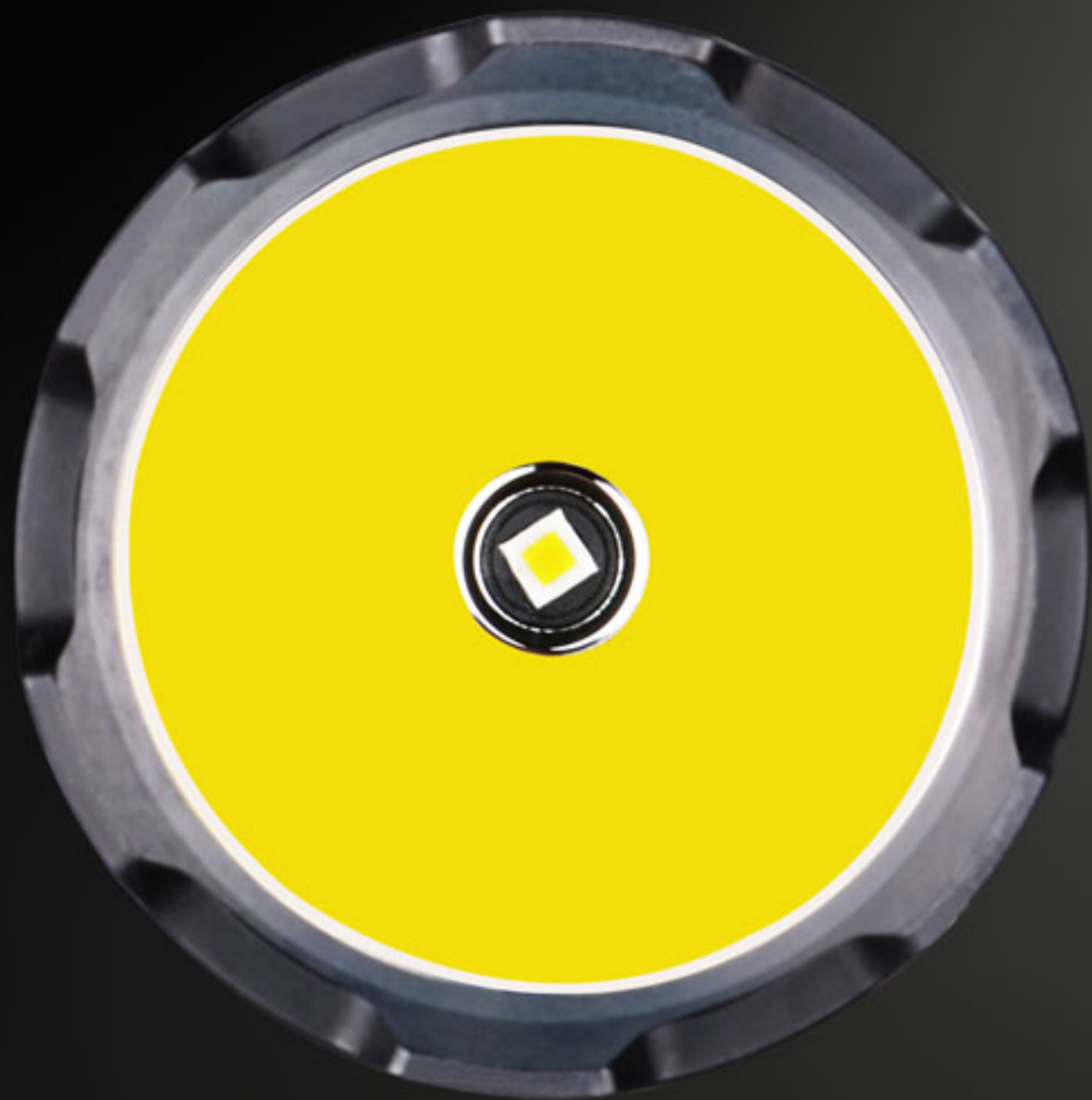
The XT15 Falcon



Patent number of Dual Tail Switch: ZL201120567033.6

Patent number of Magnetic Rechargeable Function: ZL201220234603.4

XT15 **1020 LM**
Upgraded



CREE XP-L HI V3 LED delivering
1020 ANSI lumen. Battery
runtime up to **150** hours

XT15 **1020 LM**
Upgraded

Smooth reflector with super hotspot that
shines up to **450** metres

Stronger and brighter for improved safety

XT15 **1020 LM**
Upgraded

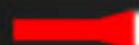
XT15



450 m

50620 cd

Similar flashlight



200 m

15000 cd

150%

Stronger

Compared to other Brand
similar flashlight

Patented magnetic FAST connection charger for quick, easy removal

XT15 **1020 LM**
Upgraded

No need to remove battery
when charging



Need to remove battery
when charging



XT15 **1020 LM**
Upgraded

**Patented dual tactical switch for non-visual,
one-handed touch operation**



XT15 **1020 LM**
Upgraded



**Dual spring system for improved drop and
shock resistance**

XT15 **1020 LM**
Upgraded

Simple lightweight direct charger

Smaller and lighter



Larger and heavier



Fits any USB port !



PC/Laptop



Mains Socket



Vehicle

XT15 **1020 LM**

Upgraded

Visible Charging Status



Indicator remains red
when charging



Indicator turns green
when fully charged

IPX-8 Waterproof (underwater to 2 metres)

XT15 **1020 LM**
Upgraded



KLARUS XT15



Specially designed charging
connector: No cover needed

Other rechargeable
flashlight

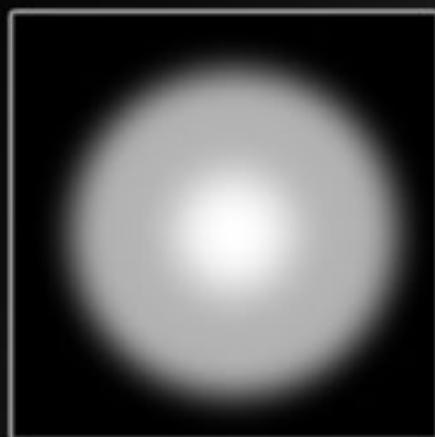


Requires sealed cover, poor
waterproof function

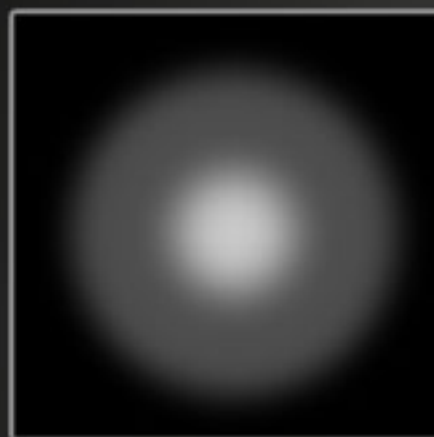
vs

3 lighting modes plus strobe

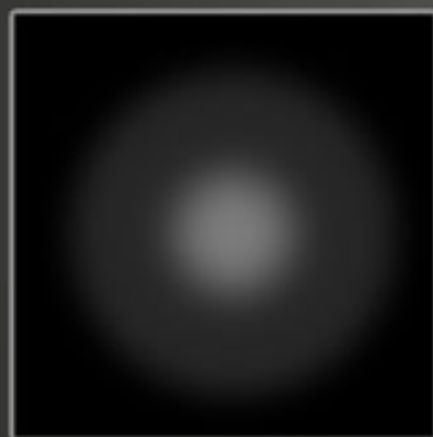
XT15 **1020 LM**
Upgraded



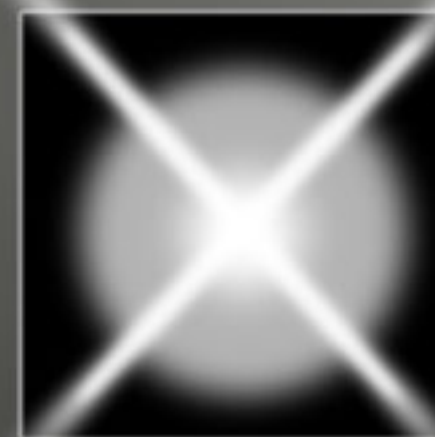
High/1020LM
(2.1h)



Medium/230LM
(6h)



Low/17LM
(150h)



Strobe/1020LM
(6.3h)



ANSI/NEMA F11



MAX Output



MAX runtime



Beam distance



**Peak beam
intensity**



Impact resistance



Waterproof

XT15 1020 LM

Upgraded

6061-T6 Aircraft aluminum,
MilSpec: MIL-A-8625 Type III
hard anodization

Integrated heat sink to efficiently
dissipate excess heat



Patented dual
tactical switch

Tactical ring

Non-reflective finish
stainless steel strike bezel

Patented magnetic
charging interface

USB port

Multi-purpose application

XT15 **1020 LM**
Upgraded

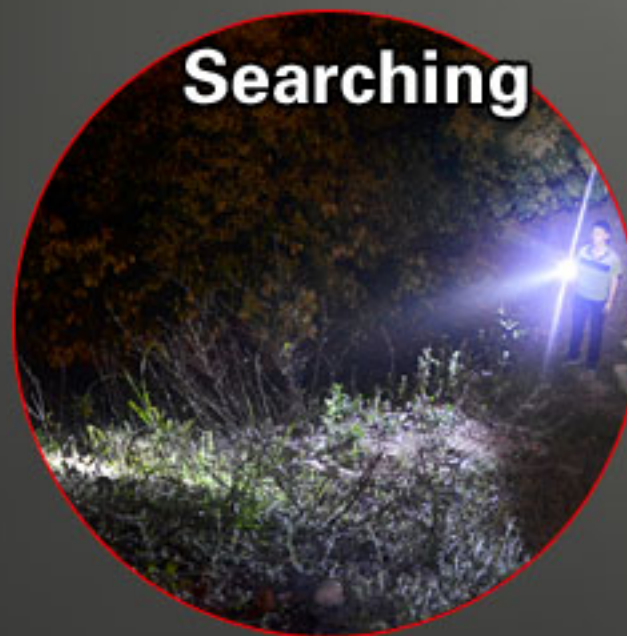
Tactical Use



Hunting



Searching



**Law enforcement &
Self-defence**



The XT15 Falcon

