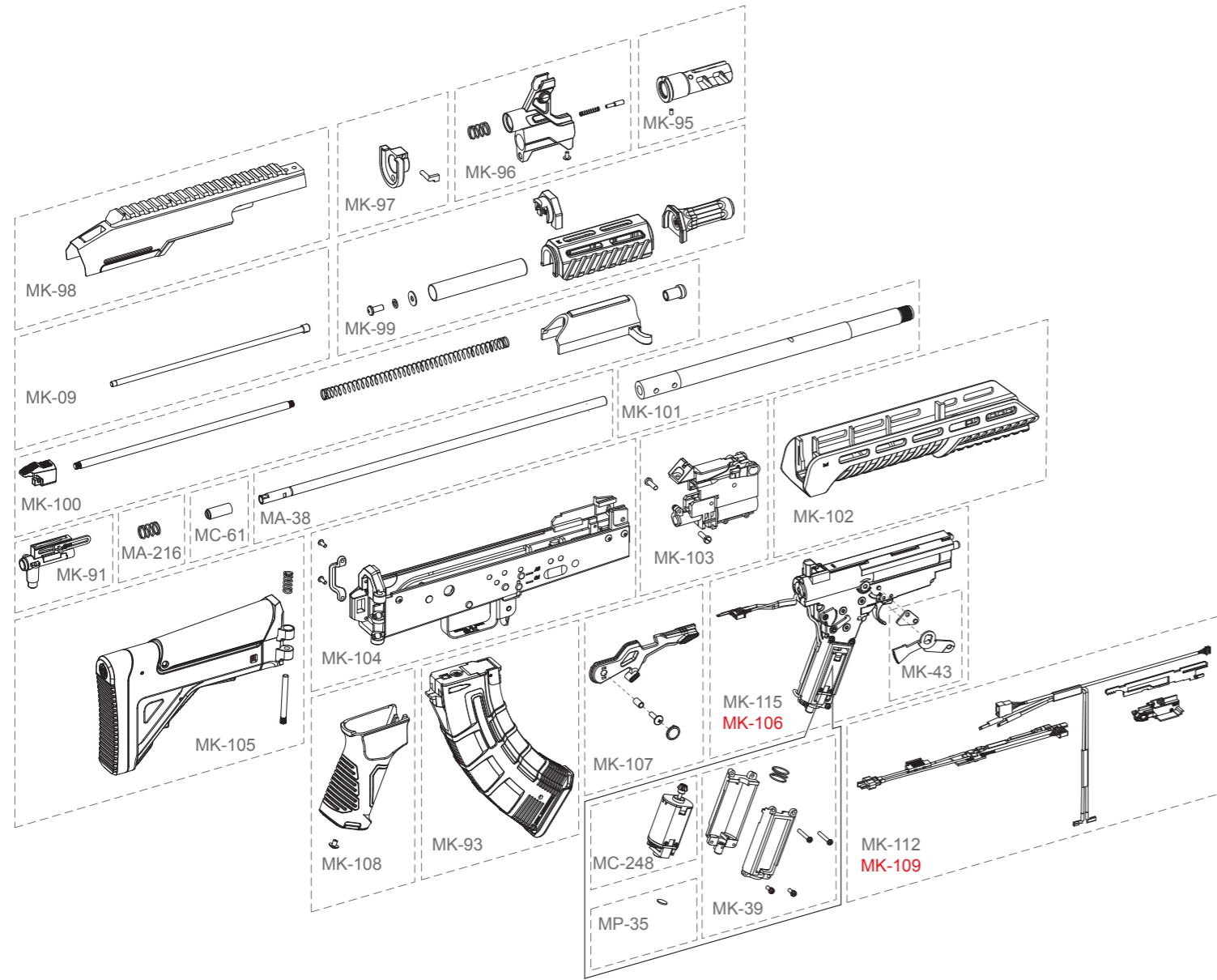


## 8 各部零件說明 Description

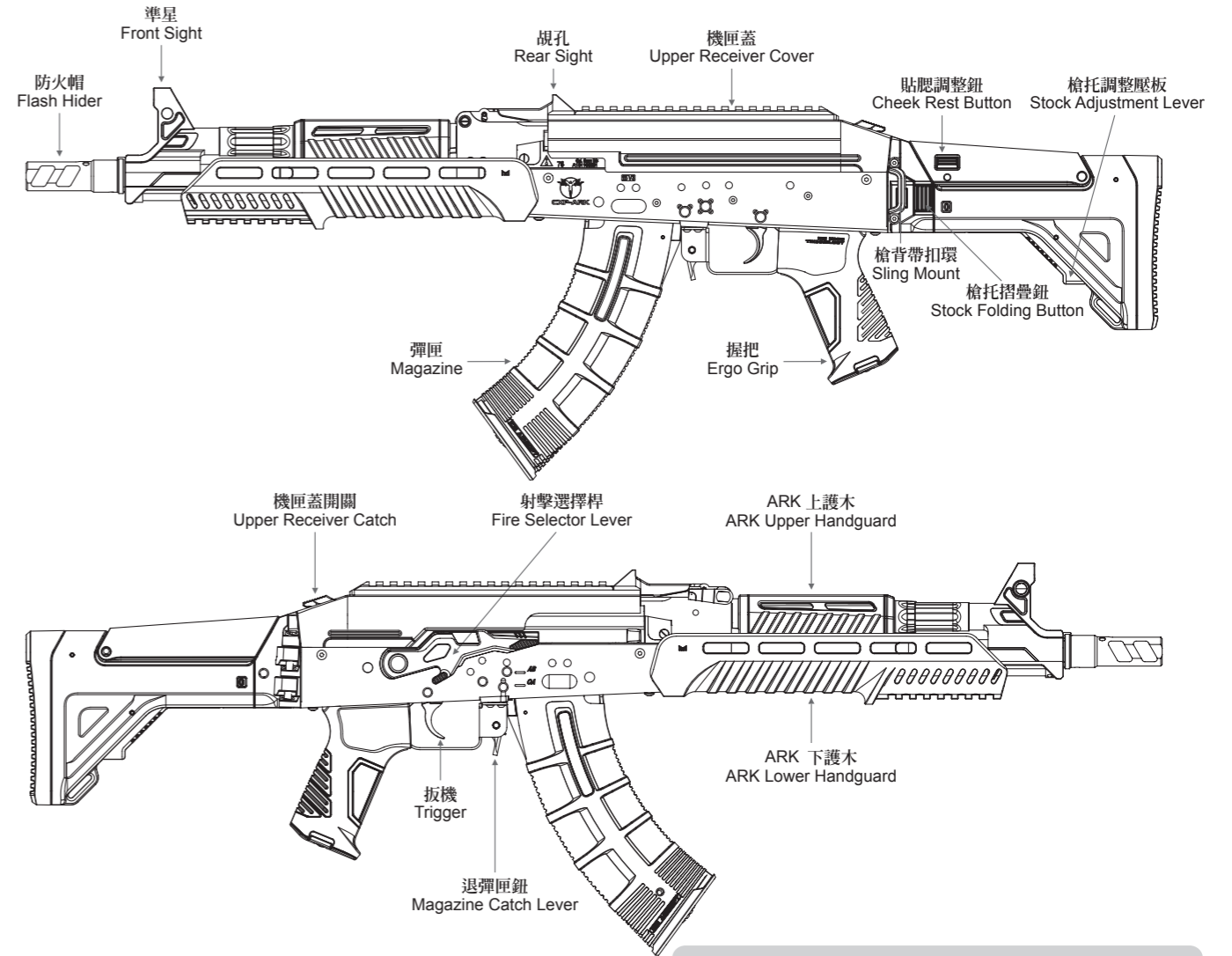
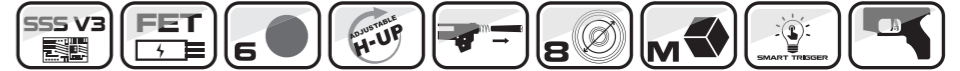
### ICS-131

※紅色的零件號碼為SSS版本用件  
The part numbers in red are for SSS V3 version.

\*每一款槍型基本配備不同依實際出貨為主。圖片僅供參考。  
The components/accessories for each model may have kind of differences depending on the actual goods. Images are only for reference.



## 1 各部名稱 Series Component



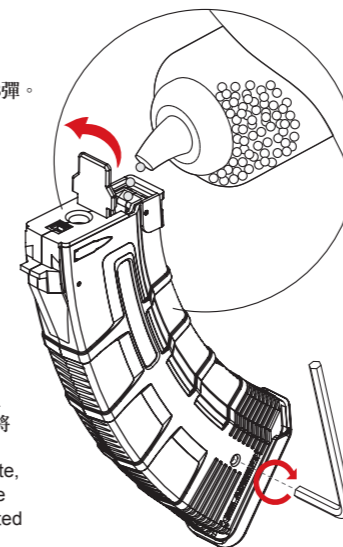
相關系列產品型號與詳細規格，請以官方網站公布為主。  
For related series product models and detailed specifications, please refer to the official website.

## 2 彈匣使用方式 Magazine Attachment

### 2-1 裝BB彈方式 Load BBs

將彈匣上蓋依箭頭方向打開再倒入BB彈。  
Open the cover to load BBs.

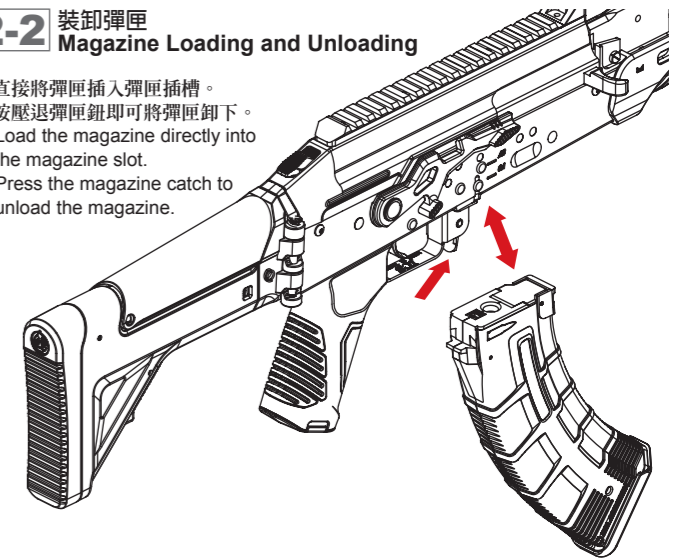
限使用 6mm BB彈。  
Please use 6mm caliber BBs only.



依箭頭方向旋緊彈匣底下旋鈕或插入3mm內六角扳手再依箭頭旋轉，即可將BB彈順利送過。  
Rotate the dial gear on the base plate, or with a 3mm allen key into the hole on the magazine housing as instructed to charge the BB feeding spring.

### 2-2 裝卸彈匣 Magazine Loading and Unloading

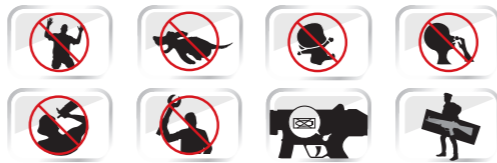
1. 直接將彈匣插入彈匣插槽。
2. 按壓退彈匣鈕即可將彈匣卸下。



## WARNING 警告 電槍使用之注意事項 Maintenance

1. 請勿使用劣質或回收BB彈，以減少槍管損耗及避免卡彈。
  2. 一旦發生卡彈或射擊速度降低時，應立即停止射擊，以避免齒輪過度耗損。請使用通槍條將殘彈清除，或檢測電池電量後方可繼續使用。
  3. 不使用本產品時，請務必將射擊選擇鈕置於保險(S)的位置上，並將電池移除並定期使用通槍條清潔槍管。
  4. 請依照原廠附贈之保險絲規格使用。不當配置可能導致零件故障，槍內配置M100彈簧請用20A保險絲，M120彈簧請用25A保險絲。
  5. 彈頭直徑6mm。其槍口動能為二焦耳以下、射程範圍為50公尺以內。
  6. 適用年齡為十六歲以上，未成人使用時需有成年人在場監督。
  7. 使用本商品不得改造或變造，並不得使用金屬彈頭。
  8. 「此槍非玩具」，濫用可能造成嚴重傷害，尤其是眼睛。使用時應確保本身及射擊範圍內所有人員均已確實穿戴護目鏡。
  9. 使用方法或注意事項請詳閱說明書內容。
- (原產地：台灣 / 製造商：一芝軒企業有限公司 / 地址：台中市神岡區東洲路79巷67號 / 電話：04-25256461)

1. To reduce the abrasion of inner barrel and to avoid jam, please do not use inferior or reused BB pellets.
  2. If your gun is jammed or the muzzle velocity has decreased, please stop shooting immediately in case the gear abrades excessively. Use the clearing rod to clear out the remaining pellets, or check your battery power before continue using your gun.
  3. Please engage the safety, dismount the battery and clear the inner barrel with the clearing rod periodically when not using this product.
  4. Please use the fuse with the specification according to the original one. Equipping improper fuse might cause malfunction to the components. If your gun is applied with a M100 spring, please use 20A fuse, if applied with a M120 spring, please use 25A fuse.
  5. The diameter of the BB pellet is 6mm. Its muzzle energy is less than two joules, and the shooting range is within 50 meters.
  6. The suitable age to operate is 16 and above. Adults must supervise at aside while juveniles operate the product.
  7. Modify, reform, and use of metal bullets on this product are strictly forbidden.
  8. This is NOT a toy. Abusing might cause severe injuries, especially to the eyes. Before operating, please make sure that every Personnel in the shooting range have worn eye protections properly, including the operator himself.
  9. Please read the manual for instruction or precaution.
- Origin: Taiwan / Manufacturer: ICS enterprise Co., Ltd / Address: No.67, Ln. 79, Dongzhou Rd., Shengang Dist., Taichung City 429, Taiwan / TEL : (886) 4-2525-6461





### 3 可動部的說明 Movable Parts

#### 3-1 護木拆卸方式 Disassembling The Handguard

- 將上護木環固定鈕向上扳起。  
Flip up the upper handguard fixing lever.
- 將上護木取出後，即可卸下彈簧。  
Remove the upper handguard from the top, then remove the spring.
- 將下護木環固定鈕向上扳起。  
Flip up the lower handguard fixing lever.
- 將下護木固定環向前拉，即可卸下護木。  
Push the lower handguard forward to remove.

#### 3-2 SF1托 操作 SF1 Operation

- 按壓貼塞塊按鈕即可上下調整貼塞塊高度。  
Press the button to adjust height of cheek rest.
- 按壓槍托調整壓板即可前後調整拖塊長短。  
Press lower button to adjust stock length.
- 將槍托卡榫往內按壓脫離卡榫溝槽，即可往右側折疊槍托。  
Press the stock catch button to release it from the catch, and fold the stock to the right side.
- 將槍托卡榫往內按壓脫離卡榫溝槽，即可往右側折疊槍托。  
Press the stock catch button to release it from the catch, and fold the stock to the right side.

### 4 精確射擊調整動作 Precision Targeting Adjustment

#### 4-1 準星調整 Front Sight Adjustment

- 壓下右側按鈕。
- 將準星調整桿壓入後，將調整扭轉左即可升高準星；將調整扭轉右即可降低準星。

- Press the button on the right side.
- Press the adjustment tool into the front sight to adjust. Rotate counterclockwise to raise, and clockwise to lower the sight.

#### 4-2 選擇射擊模式 Shooting Mode Setting

- 保險 Safe
- 連發 Semi-Auto
- 單發 Full-Auto
- 彈簧釋放 Spring Releases Mechanism

※此產品具備「彈簧釋放功能」

- 將上機匣蓋打開才可撥至彈簧釋放。
- 槍上有彈匣的情況下，使用彈簧釋放功能會導致第一發雙彈射出或小便彈是正常情形。
- 槍支使用完並且將彈匣卸下後，朝安全處打3-5發單發清除殘彈後即可進行彈簧釋放。

※彈簧釋放可以延長彈簧壽命，避免長期擠壓造成疲乏。

※This product is equipped with a spring tension release mechanism.

- Open receiver cover to release spring tension.
- It is a normal condition that the gun might shoot a double shot, or a weak shot on your first shot after releasing spring tension with magazine loaded.
- After playing and removing the magazine, fire 3-5 rounds in semi-auto mode towards safety directions to clean the remaining BBs inside the H-up chamber and then release spring tension.

※Spring release can extend the spring lifetime by avoiding spring fatigued from long time compression.

### 5 H-UP 彈道調整 H-UP Adjustment

**注意** 非必要時，手指請勿放置於H-UP調整處，避免受傷  
※To avoid injuries, only put your finger on the H-up adjustment when necessary.

- 將槍機拉柄往後拉到底並以射擊選擇桿固定在後。
- 視彈道進行撥片調整。
- 調整完即開保險釋放槍機拉柄。

- Pull the charging handle to the rear and then hold it by the fire selector lever.
- Push or pull the H-UP lever to adjust the trajectory.
- When adjustment is completed, switch to semi to release charging handle.

H-UP調整：BB彈呈現一直線的彈道才是正確射法。  
過於上飄：將撥片往前推。  
過於下墜：將撥片往後拉。

H-up Adjustment: Make sure the trajectory of the BB pellets to be straight.  
When the BB pellet flies up: Push the H-UP lever forward to lower the trajectory.  
When the BB pellet falls down: Push the H-UP lever backward to raise the trajectory.

### 6 電池的拆裝方法 Battery Installation and Disassembly

**注意** 重新組裝時，必須依反向動做組合  
※Reassembling is the reverse of disassembling procedures.

#### FET

- 按下槍托調整壓板並拉至最後(卡榫所在位置)。Press the stock adjustment lever and pull the stock to the end.
- 將槍托固定片向內壓後，即可將槍托取下，方便安裝電池。Press the stock locking spring inward to remove the stock for easy battery installation.
- 將電池與線材定位好，再裝回槍托。Arrange both battery and wires in position, then put the stock back.

#### SSS V3

- 移除槍托橡膠底板。Remove the buttplate.
- 將電池與線材定位好，同時注意燈號是否正常。Arrange both battery and wires in position and make sure the LED light is right.
- 將尾蓋蓋回。Put the buttplate back.

### 7 齒輪箱與槍身的取出與安裝 The Gearbox & Receiver Take Out / Install

**注意** 先卸彈匣跟電池，再進行拆解  
※Unload the magazine and battery before you proceed to disassemble.

#### 7-1 取出齒輪箱 Take Out Gearbox from Receiver.

- 將彈匣卸下。Remove the magazine.
- 壓下機匣蓋開關後，將機匣蓋向上打開固定在前。(需確實向前固定避免落下夾傷) Press the upper receiver catch to open the upper receiver cover and keep it opening in the front. (Avoid the upper receiver falling from hands clipping)
- 將機匣蓋開關向前推取出槍機拉柄組。Push the upper receiver catch forward to remove the charging handle set.
- 將槍管座螺絲卸下，並將槍身前段往前抽出。Remove the barrel mount screws, and then pull the front assembly forward to remove.
- 將槍托摺疊後，把線材抽出槍托。Fold the stock and then and unplug the wires.
- 將握把與射擊選擇桿卸下。Remove the Ergo grip and the fire selector lever.
- 將齒輪箱向上取出，即可與槍身分離。Remove the gearbox upward to separate it from the receiver.
- 使用5mm六角扳手，將尾頂桿向內壓入轉至45度即可將尾頂桿與彈簧一同抽出。Use 4mm Allen Key, insert it to the spring guide and then press down to turn 45 degrees then take out the spring guide and spring.

#### 7-2 安裝齒輪箱 Install Gearbox into Receiver.

- 將電線依圖示做好整理。Put the wires in order as shown on the image
- 將Y型連動片及保險旋片依圖示裝入。注意：裝入時請注意配合位置。Assemble the selector plate as the image shown. Attention: Please take extra caution to the coordinate positions while assembling.
- 將齒輪箱裝入槍身，並將電源線整理妥當。Insert the gearbox into the receiver, and arrange the wires in order.