



GVP-APE



ICHIH SHIVAN ENTERPRISE CO., LTD

WWW.ICSBB.COM



Born for Combat with all Terrain

Evolution !!!!!!!!

ICS focus on innovation and development to create a CXP-APE. Versatile and user-friendly rifle with simple design. Players can overcome all terrain combat easily.

The new Keymod system with five positions is superior to accessory rails. The folding stock as the CXP-APE has ergonomic design, cheek rest is adjustable for height and fore/aft positions, and better stability & accuracy by rubber butt-pad. CXP-APE will bring you a new experience!!

ICS-230

IMT-230-1

ICS-231

IMT-231-1



CXP-APE

ICHIH SHIVAN ENTERPRISE CO., LTD
WWW.ICSB.COM

Keymod System

The new Keymod system with five positions is superior to accessory rails, easy to install batteries with Quick-Detach functionality.



GXP-APE

ICHIH SHIVAN ENTERPRISE CO., LTD
WWW.ICSB.B.COM

Upper Receiver

With free-floating rail system and intuitive, ambidextrous controls, you have a platform that is a natural fit for any operator and gives him all the options he needs.



GXP-APE

ICHIH SHIVAN ENTERPRISE CO., LTD
WWW.ICSB.COM

Quick-Detach Barrel System

Available with a Quick-Detach barrel system that allows shooter-level changes of barrel length.

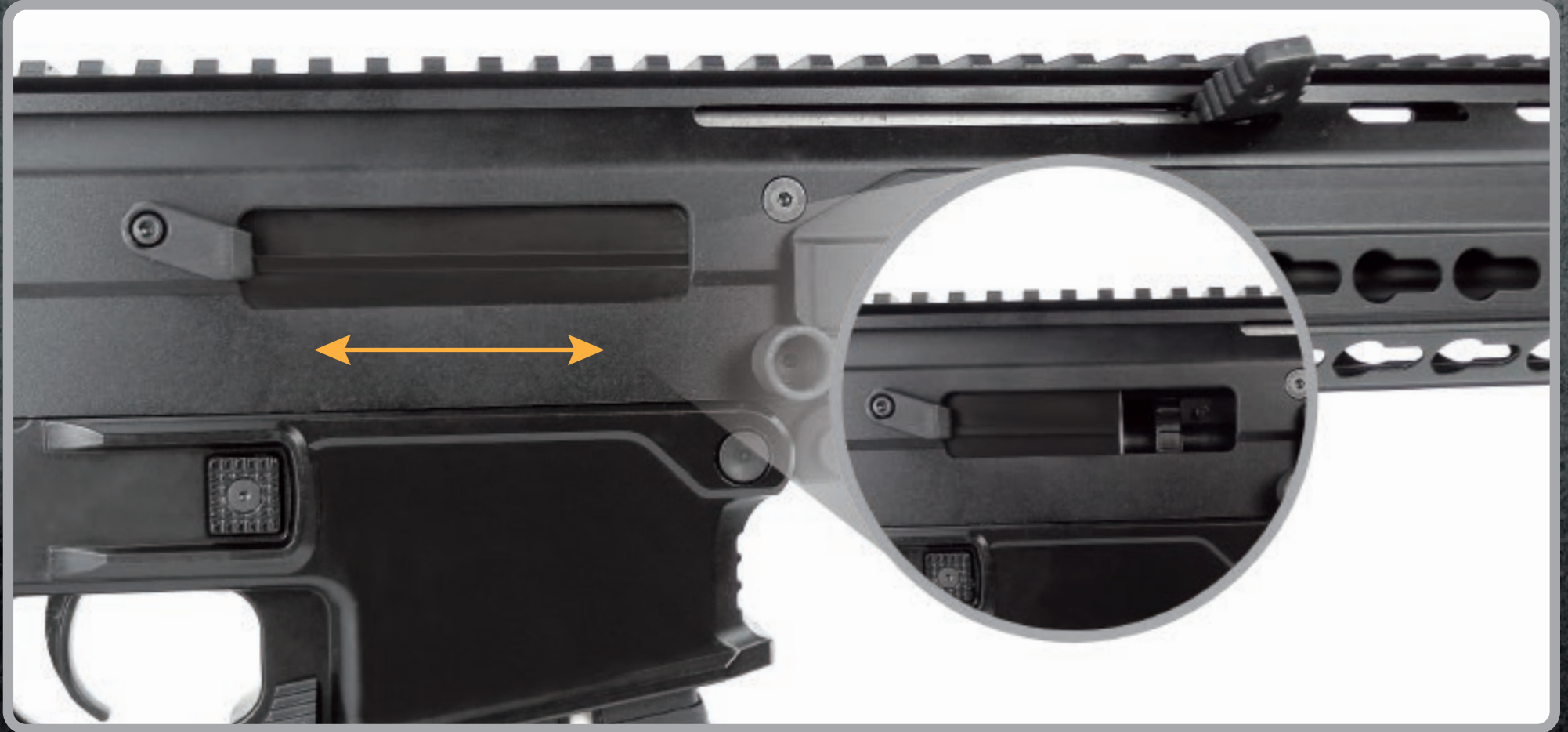


GXP-APE

ICHIH SHIVAN ENTERPRISE CO., LTD
WWW.ICSB.COM

EBB System

ICS Electric Blow Back System increases the simulation to the action of the real firearms without reducing shooting precision.



GXP-APE

ICHIH SHIVAN ENTERPRISE CO., LTD
WWW.ICSBBS.COM

Magazine Release

Ambidextrous magazine release, convenient for both right-handed and left-handed players.



GXP-APE

ICHIH SHIVAN ENTERPRISE CO., LTD
WWW.ICSB.COM

Selector Lever & Charging Handle

Ambidextrous selector lever, charging handle convenient for both right-handed and left-handed players.



GXP-APE

ICHIH SHIVAN ENTERPRISE CO., LTD
WWW.ICSB.B.COM

Situation Flexible 1

The folding stock as the APE has ergonomic design, cheek rest is adjustable for height and fore/aft positions, and better stability & accuracy by rubber butt-pad.



ICHIH SHIVAN ENTERPRISE CO., LTD
WWW.ICSB.COM

How to Install the Battery in SF1

1. Press the button on stock.



2. Pull the stock into the position of lock.



4. Gently pull the wire out and connect the plugs, then slide the battery in.



3. Press the latch and pull off the stock.



5. Battery type: Li-Po 11.1V 1000mAh 15C~20C.

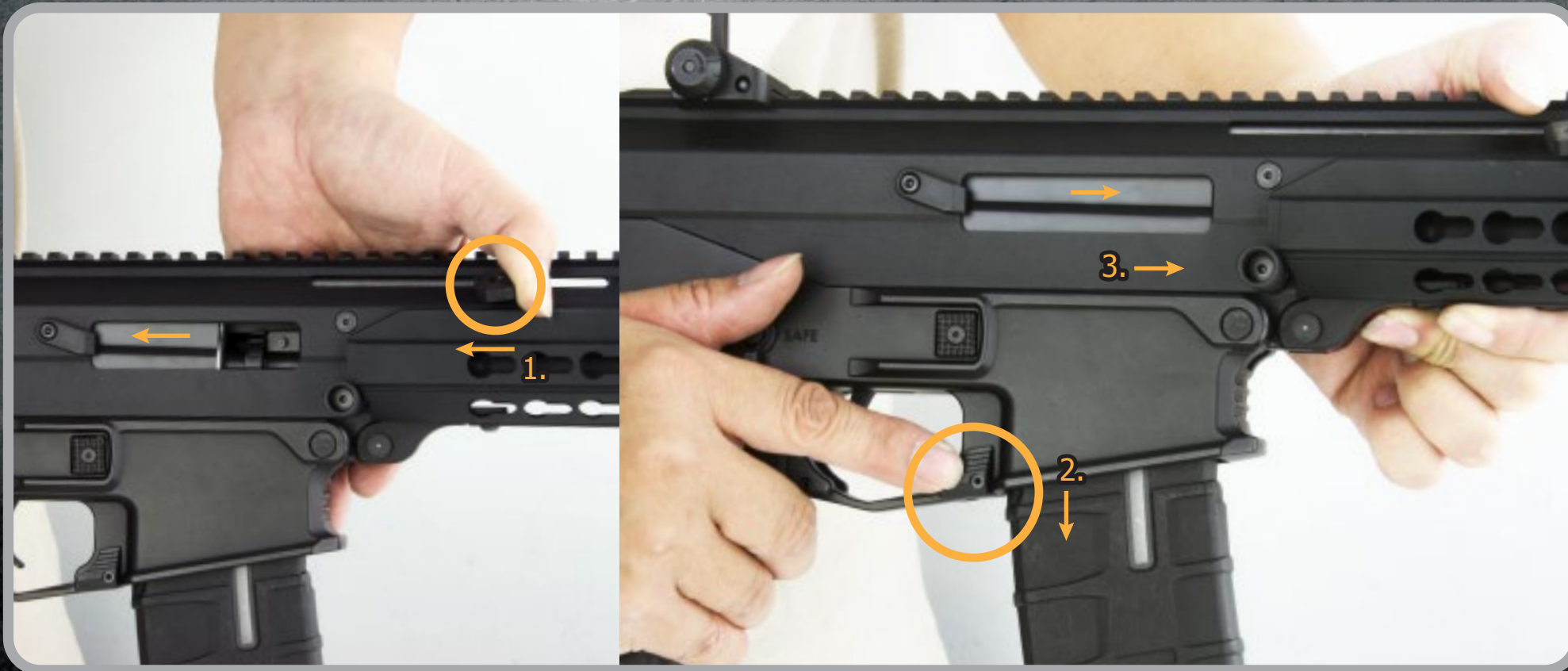


GXP-APE

ICHIH SHIVAN ENTERPRISE CO., LTD
WWW.ICSB.COM

Pull Back Charging Handle

Charging handle can be locked & released (open to adjust hop up).



GXP-APE

ICHIH SHIVAN ENTERPRISE CO., LTD
WWW.ICSB.COM



Newly Designed Flash Hider

Compared to the regular AR flash hider, the CXP-APE is much more exciting.



Flip-up Sight

Iron sights quickly pop up and fold to deal with a variety of battle situations.



CXP-APE

ICHIH SHIVAN ENTERPRISE CO., LTD
WWW.ICSBB.COM



T Magazine

The innovative 300-round high capacity magazine provides players maximum firepower. It is specially designed to provide players a quick way to see how many BB's remain in the magazine. The skid-proof magazine shell provides excellent grip for all weather conditions. Players can reload the magazine rapidly and quickly return to the battlefield.



Ergonomic Pistol Grip

Easy to use and more comfortable during long patrol missions, the grip also provides more control for intensive combat situations.



GXP-APE

ICHIH SHIVAN ENTERPRISE CO., LTD
WWW.ICSB.COM



Spring Release Function

The ICS Spring Release actively protects the spring, piston and your airsoft investment. This innovative design integrates the safety selector lever and the spring release function. The spring is automatically released when you select Safe on the selector switch.



Enlarged Trigger Guard

Enlarged guard design is much more friendly for players wearing gloves.



GXP-APE

ICHII SHIVAN ENTERPRISE CO., LTD
WWW.ICSB.COM



Split Gearbox

Consistent with ICS superior design, the gearbox is easy to disassemble and convenient to maintain and repair.



Super Durable

Factory installed upgraded reinforced piston, reinforced MIM pinion, and bevel gear. These features allow the gun to operate smoothly and reliably.



GXP-APE

ICHIH SHIVAN ENTERPRISE CO., LTD
WWW.ICSB.B.COM

CXP-APE

- Gun Length : 716mm (784mm)
- Barrel Length : 263mm
- Weight : 2900g
- Muzzle Velocity: 120 m/s (395fps)
- Battery Type : Li-Po 11.1V 1000mAh
- Magazine : MA-186 T Hi-cap magazine
- Mag. Capacity : 300 rounds
- Motor : Turbo 3000 long pin
- Spring : M120
- Material : Metal

CXP-APE R

- Gun Length : 827mm (895mm)
- Barrel Length : 375mm
- Weight : 3000g
- Muzzle Velocity: 120 m/s (395fps)
- Battery Type : Li-Po 11.1V 1000mAh
- Magazine : MA-186 T Hi-cap magazine
- Mag. Capacity : 300 rounds
- Motor : Turbo 3000 long pin
- Spring : M120
- Material : Metal

1. Battery type is recommended, not included.
2. For AEG with M100 spring, it is recommended to use voltage 7.4V Li-Po or 9.6V Ni-Mh batteries only.
3. For different requirements and regulations in various market and area, the specifications may be revised on demand, and the AEG actually fetched shall prevail.



ICS-230



IMT-230-1



ICS-231



IMT-231-1



CXP-APE

ICHIH SHIVAN ENTERPRISE CO., LTD
WWW.ICSB.COM